

Country Birdhouse Tri-Panel Card

MEASUREMENTS



Thick Basic White Cardstock
10 ½" x 4 ¼" scored at 3 ½" & 7"

Country Woods D. Ser. Paper
4" x 3 ¼" (3) for card base layers
4 ½" x 3 ¼" (3) for die cut layers
4" x 3 ¼" (2) for back side panels
4 ¼" x 4" (3 diff.) for bird houses
3" x 1" for die cut flower boxes
Scrap pieces for pedestals

Basic White Cardstock
Scrap pieces for roof edging,
And Stamped images

Basic Gray Cardstock
Scrap pieces for roof

Pedal Pink Cardstock
Scrap pieces for die cut flowers

Lost Lagoon Cardstock
Scrap pieces for die cut foliage

Pool Party Cardstock
5" x 3 ½" for die cuts (3)

DIRECTIONS

1. Score the 10 ½" x 4 ¼" Thick Basic White Cardstock on the long side at 3 ½" and 7".
2. Add the three 4" x 3 ¼" pieces of the Country Woods DSP to the center of each panel:



3. Use the 2nd largest Countryside Corners Die to cut three layers from Pool Party Cardstock. Use the 3rd largest Countryside Corners Die to cut three pieces from the wood designer series paper and then adhere them to the Pool Party shapes.
4. Add the die cut panels to the card base, lining up the bottom of the top slant with the top of the card base as shown:



5. Die cut three birdhouses from different patterns of the designer series paper. Die cut the 3 roof pieces from Basic Gray and the 3 lattice pieces from Basic White and then adhere them to the birdhouses. Add the birdhouses to the card base as shown. (I started with the birdhouse on the left as the highest one, but you could make them all the same height.)
6. Punch a ½” circle from Basic Black Cardstock and adhere it to the center of the birdhouse.
7. Add a cork round below it for the peg.
8. Die cut the pedestals for each of the birdhouses and add them to the card base below the birdhouse. You may have to add a little length to the pole for the highest birdhouse.
9. Using Memento Black Ink, stamp 6 of the flower images. Color them as desired and then die cut or fussy cut. Add three to each of the birdhouses on the side. Die cut three of the box shapes from the DSP and then add them over the bottom of the flowers with Dimensionals.
10. Using Memento Black Ink, stamp two of the small bouquet images and then color them. Add them to the birdhouse in the middle as shown.
11. Use the small flower dies in the Country Birdhouse Dies to die cut about 8 flowers.
12. Use the Flowers of Beauty Die to die cut some foliage.
13. Add the foliage to the bottom of the birdhouse pedestal as shown. Scatter pink flowers as shown.
14. Add two pieces of 4” x 3 ¼” DSP to the back of the card on each side. Leave the middle section for writing a sentiment.



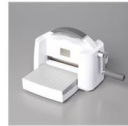


Country Birdhouse Tri Panel Card

Supplies



Paper Trimmer
152392
Price: \$28.00



Stampin' Cut & Emboss
Machine
149653
Price: \$130.00



Basic White 8-1/2" X 11"
Cardstock
159276
Price: \$13.00



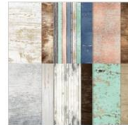
Basic White 8-1/2" X 11"
Thick Cardstock
159229
Price: \$11.25



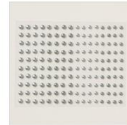
Multipurpose Liquid Glue
110755
Price: \$6.00



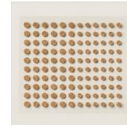
Country Birdhouse
Bundle (English)
163401
Price: \$46.75



Country Woods 12" X 12"
(30.5 X 30.5 Cm)
Designer Series Paper
163393
Price: \$12.50



Basic Gray & Smoky
Slate Pearls
163416
Price: \$7.50



Adhesive-Backed Cork
Rounds
162643
Price: \$6.50



Daffodil Delight Stampin'
Blends Markers Combo
Pack
144603
Price: \$9.00



Petal Pink Stampin'
Blends Markers Combo
Pack
147272
Price: \$9.00



Pool Party Stampin'
Blends Combo Pack
154894
Price: \$11.00



Tuxedo Black Memento
Ink Pad
132708
Price: \$8.00



Lost Lagoon 8-1/2" X 11"
Cardstock
133679
Price: \$11.50



Basic Gray 8-1/2" X 11"
Cardstock
121044
Price: \$11.50



Basic Black 8-1/2" X 11"
Cardstock
121045
Price: \$11.50



Linen Thread
104199
Price: \$5.00



Stampin' Dimensionals
104430
Price: \$4.25



Countryside Corners
Dies
161471
Price: \$28.00



Flowers Of Beauty Dies
163375
Price: \$37.00